

Culturally Responsive Teaching & Disabilities

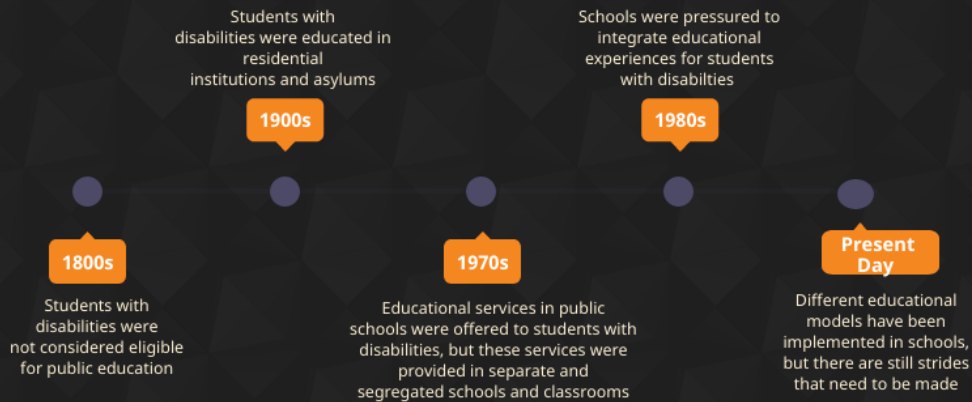
What is Culturally Responsive Teaching (CRT)?

Culturally Responsive Teaching is a pedagogy that recognizes the importance of including students' cultural references in all aspects of learning

Disability culture exists

Culture influences our behaviors, shapes how we view the world and ourselves. "culture also determines how we make sense of disability and respond to people with disabilities. Persons with disabilities are viewed very differently dependent upon the region of the world in which they live"

Be aware of the history of disabilities and educational reforms



How to impliment CRT in your classroom for students with disabilities



Use person-first language. (i.g. A student with a disability not a disability student)



Acknowledge students abilities as well as their disabilities



Give students with disabilities the opportunity to be "the helper" and not "the helped"



Motivate students to self-advocate and be an active participant in their education



Challenge stereotypes of disabilities shown in the media

"As we consider the many cultures represented in our classrooms, we might also consider students with disabilities as a cultural group."

~ Alice-Ann Darrow

Chelsea **Green**e

powered by

 **PIKTOCHART**